



SOFFIATORE ELIET

BL 450 versione 2 (dal 01-02-2001)

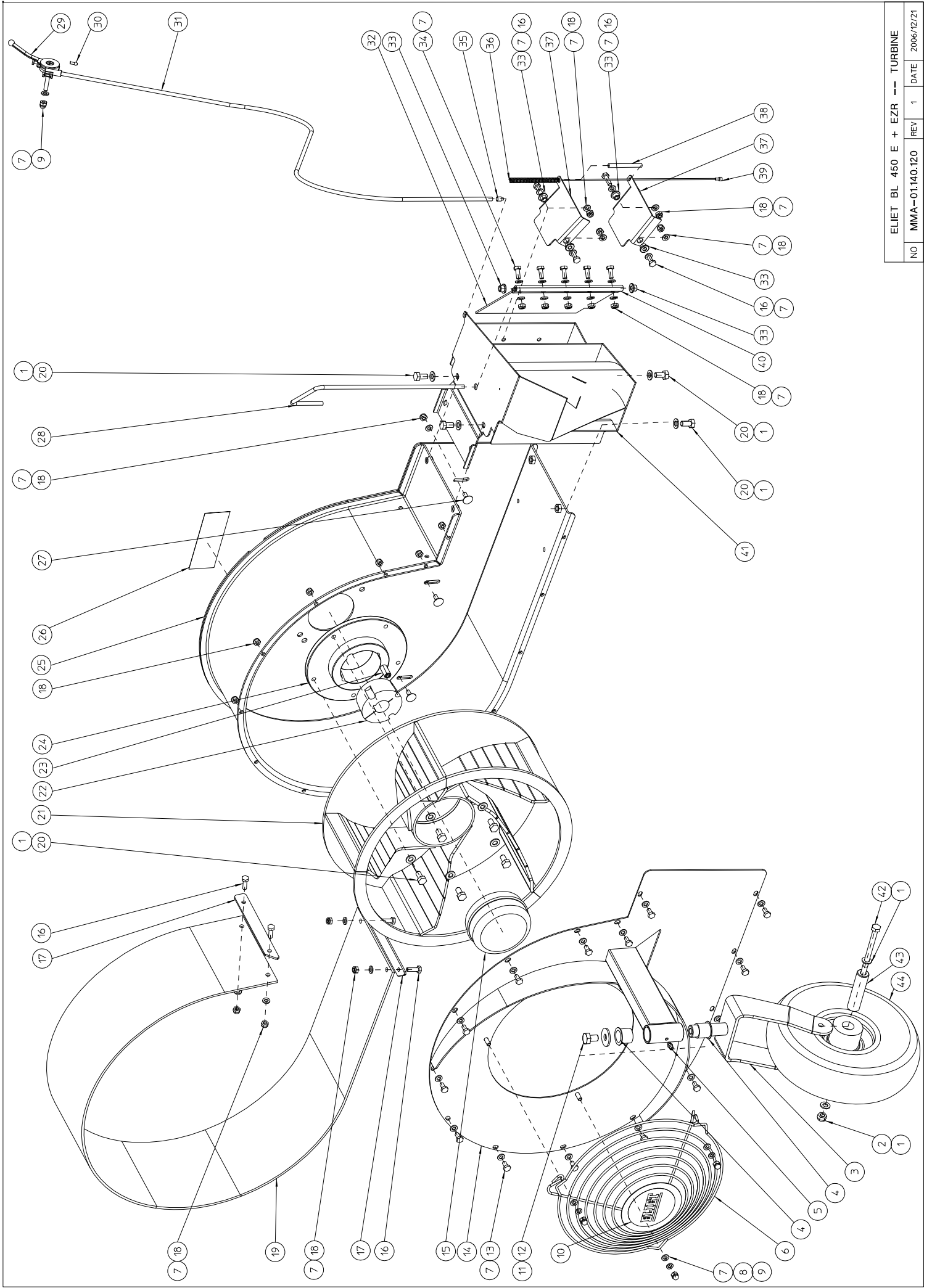
ESPLOSO RICAMBI

ELIET SPARE PARTS MANUAL

BL 450 VERSION 2

GENERAL OVERVIEW ASSEMBLYLISTS

	LIST NUMBER	DESCRIPTION	DRAWING NR.	BUILT AFTER
2	ASSEMBLYLIST 1	BL 450 E + EZR -- TURBINE	MMA 01 140 120-1	01/02/2000
3	ASSEMBLYLIST 3	BL 450 EZR -- CHASSIS	MMA 01 140 210-1	01/02/2001
4	ASSEMBLYLIST 4	BL 450 EZR -- TRANSMISSION	MMA 01 140 220-1	01/02/2001



ELIET BL 450 E + EZR --- TURBINE			
NO	MMA-01,140,120	REV	DATE
		1	2006/12/21

ELIET SPARE PARTS MANUAL

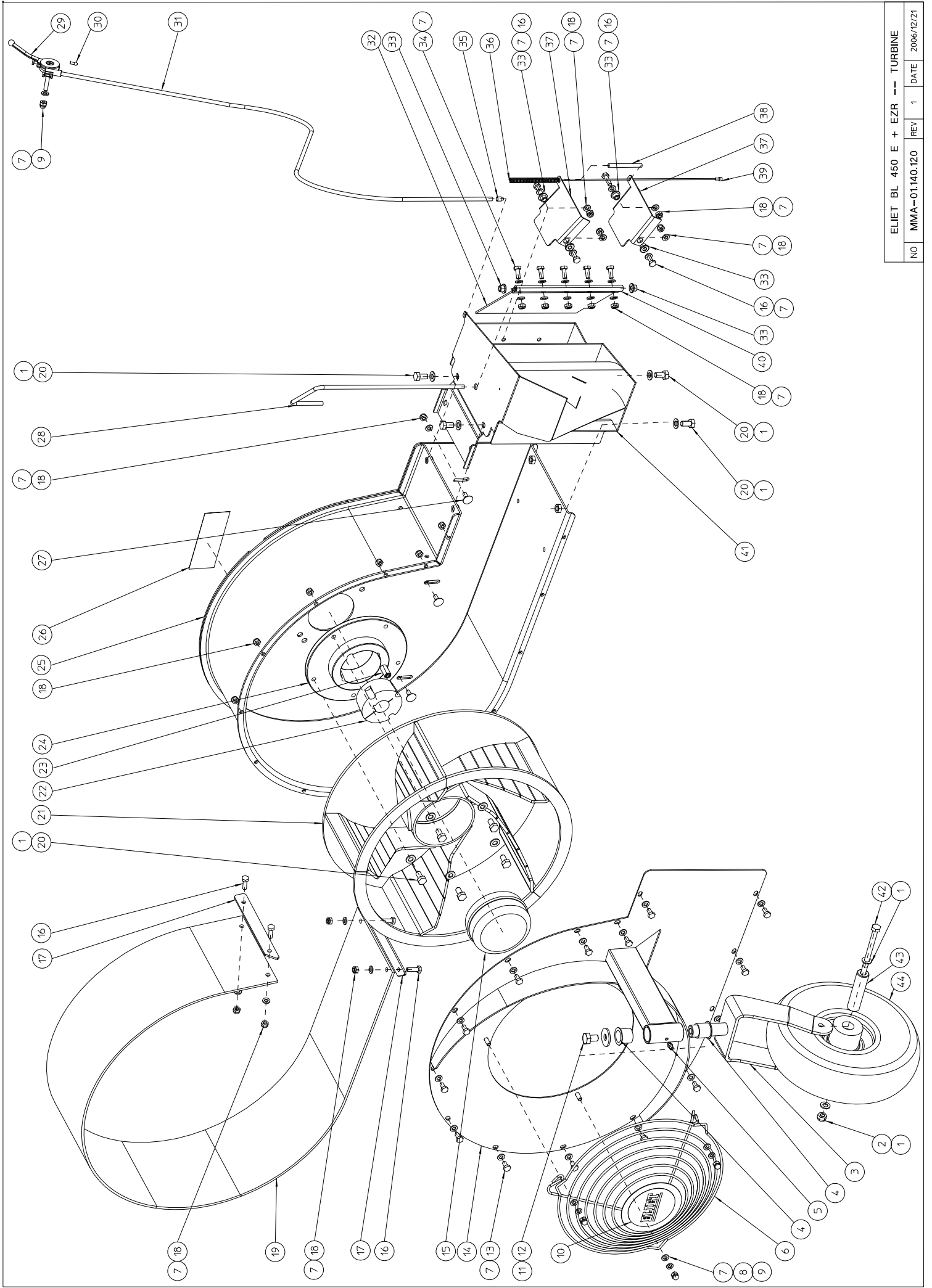
BL 450 VERSION 2

ASSEMBLYLIST 1

BL 450 E + EZR -- TURBINE

MMA 01 140 120-1

ITEM	PART NUMBER	DESCRIPTION	QUANTITY
1	BS 531 000 800	WASHER M8 DIN 125	11
2	BS 502 000 800	SELF LOCKING NUT M8 DIN 985	1
3	MPA 01 140 020	WHEEL FORK	1
4	BR 112 202 100	NYLON BUSHING WITH COLAR (20/24/29x21/1)	2
5	BY 100 106 100	GREASE FITTING M6	1
6	MPA 01 140 190	0	1
7	BS 531 000 600	WASHER M6 DIN 125	43
8	BS 534 000 600	LOCK WASHER M6 DIN 6798A	3
9	BS 505 500 600	NUT M6 DIN 1587	4
10	BQ 501 010 070	STICKER ELIET Ø 82MM	1
11	BS 532 010 305	WASHER M10X30X2.5	1
12	BS 512 001 016	BOLT M10X16 DIN 933	1
13	BS 512 000 612	BOLT M6X12 DIN 933	14
14	MPA 01 140 160	FRONT PLATE TURBINE	1
15	BT 162 501 081	0	1
16	BS 512 000 620	BOLT M6X20 DIN 933	8
17	MPA 01 140 040	0	2
18	BS 502 000 600	SELF LOCKING NUT M6 DIN 985	30
19	BR 900 001 260	RUBBER SILENCER	1
20	BS 512 000 816	BOLT M8X16 DIN 933	9
21	MPA 01 140 170	IMPELLOR 5 WINGS ALU	1
22	BB 501 251 600	TAPERLOCK TL 2012-1"	1
23	BB 501 311 220	SET SCREW 7/16"X7/8"	1
24	BA 281 753 201	FLANGE Ø175x32 - TL 2012	1
25	MPA 01 140 140	TURBINE	1
26	BQ 505 010 010	IDENTITY STICKER CE 120X30	1
27	BS 554 100 616	BOLT M6X16 DIN 603	3
28	MPA 01 140 155	#N/A	1
29	BN 312 408 500	CONTROL HANDLE	1
30	BK 213 020 010	CABLE END	1
31	BK 212 061 200	CABLE CONDUCTOR 6MM 120CM	1
32	BR 910 000 280	NYLON CLAPPER	1
33	BR 112 060 800	NYLON BUSHING WITH COLAR (6/10/15x8.5/2)	6
34	BS 512 000 616	BOLT M6X16 DIN 933	5
35	BK 170 406 300	CABLE CONDUCTOR END	1
36	BV 914 000 040	SPRING	1
37	MPA 01 140 180	0	2
38	BK 212 060 060	CABLE CONDUCTOR 6MM 6CM	1



ELIET BL 450 E + EZR --- TURBINE			
NO	MMA-01,140,120	REV	DATE
		1	2006/12/21

ELIET SPARE PARTS MANUAL

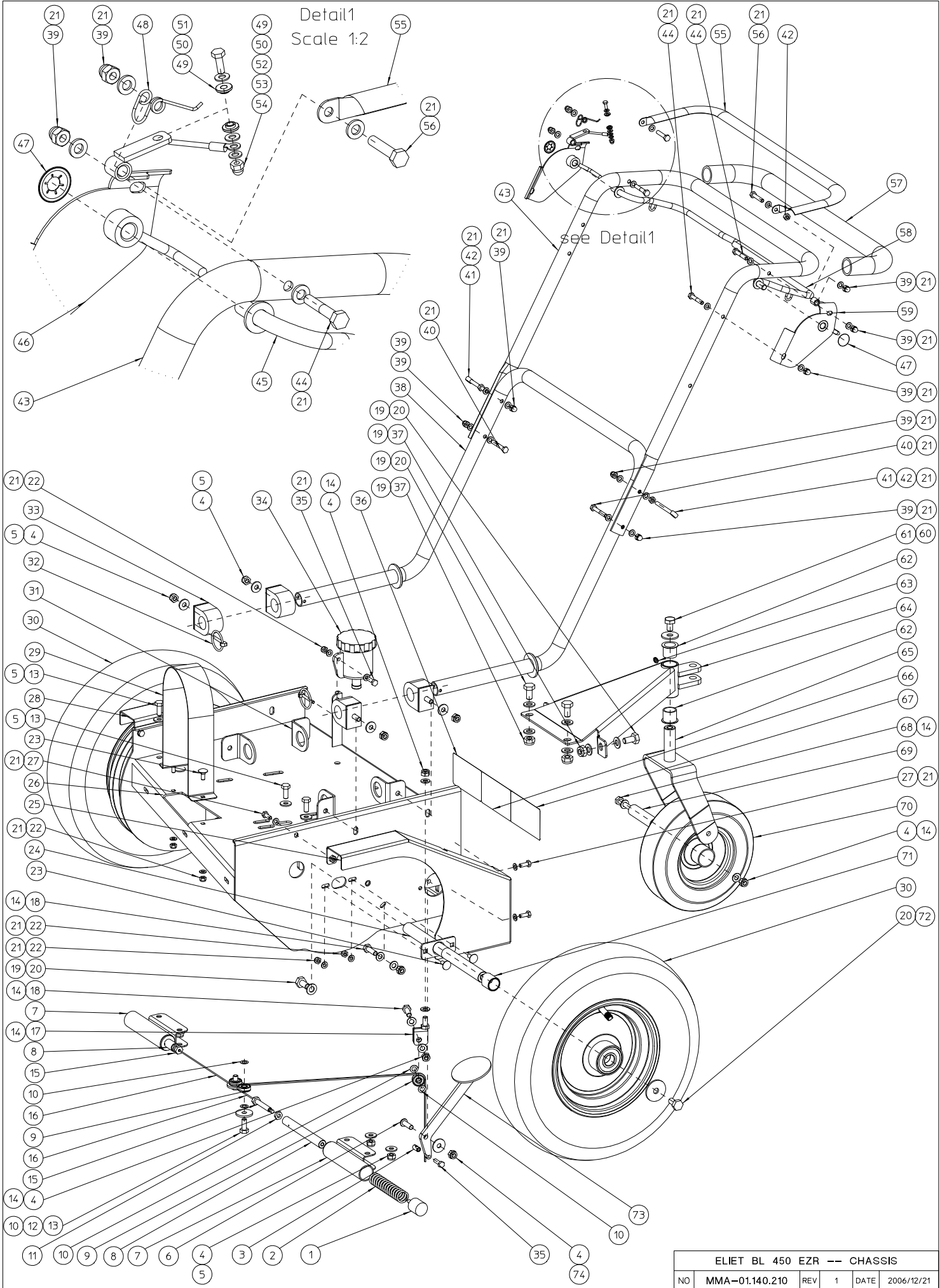
BL 450 VERSION 2

ASSEMBLYLIST 1

BL 450 E + EZR -- TURBINE

MMA 01 140 120-1

ITEM	PART NUMBER	DESCRIPTION	QUANTITY
39	BK 151 201 500	CABLE 2x1500MM	1
40	MPA 01 140 175	0	1
41	MPA 01 140 130	WIND FLOW DEFLECTOR	1
42	BS 511 000 848	BOLT M8X80 DIN 931	1
43	MPA 01 140 010	WHEEL AXLE	1
44	BW 025 020 010	WHEEL COMPLETE 3.00-4:	1



ELIET BL 450 EZR -- CHASSIS					
NO	MMA-01.140.210	REV	1	DATE	2006/12/21

ELIET SPARE PARTS MANUAL

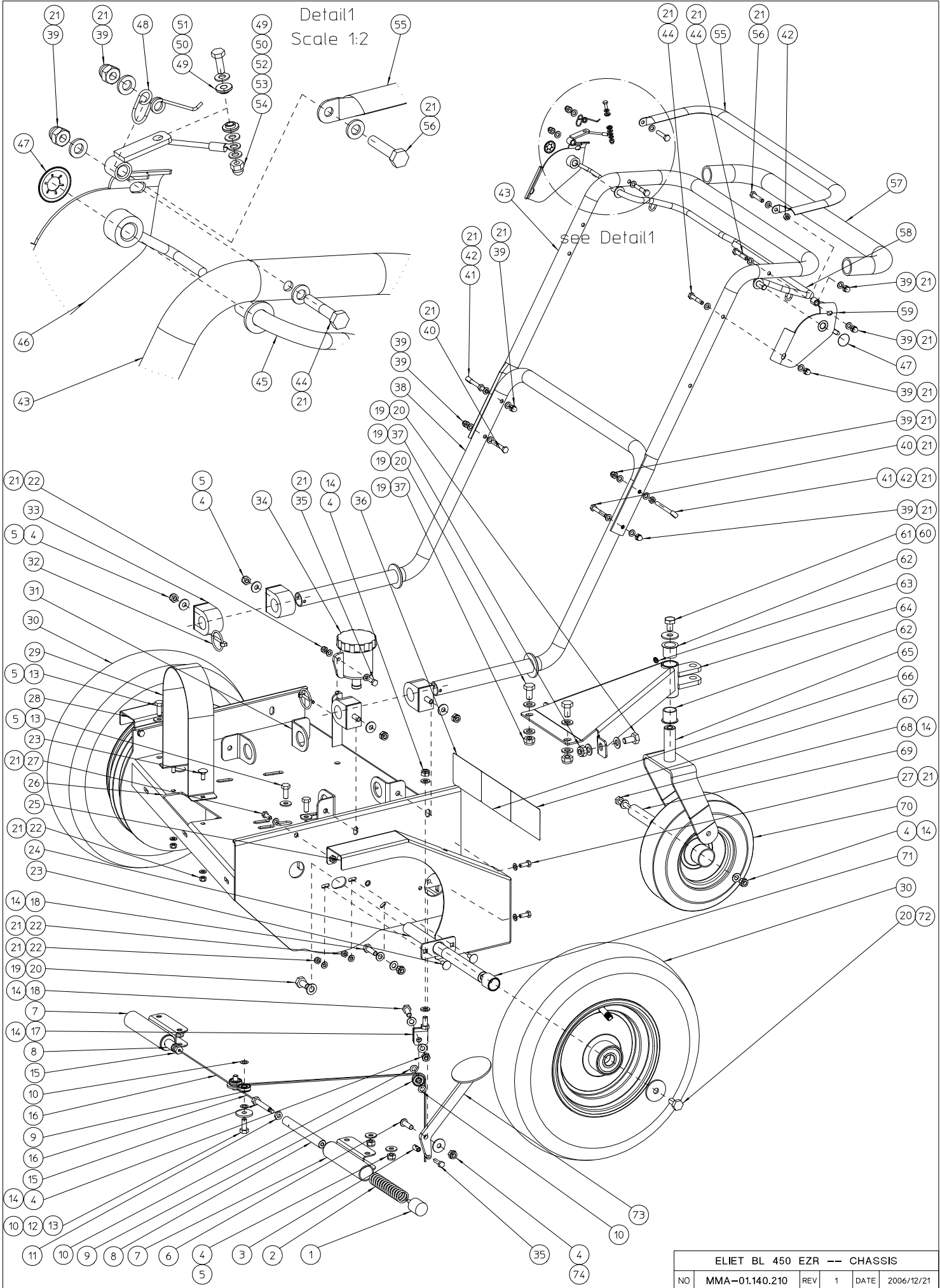
BL 450 VERSION 2

ASSEMBLYLIST 2

BL 450 EZR -- CHASSIS

MMA 01 140 210-1

ITEM	PART NUMBER	DESCRIPTION	QUANTITY
1	BR 600 525 200	ANTIVIBRATION BLOCKS 25X20D M6X18	2
2	BV 911 000 030	SPRING 22X3X143	2
3	MPA 01 140 545	0	1
4	BS 502 000 800	SELF LOCKING NUT M8 DIN 985	14
5	BS 532 008 204	WASHER M8X20X2	12
6	BS 522 500 825	SCREW M8X25 ISO 7380	1
7	MPA 01 140 520	0	2
8	MPA 01 140 525	0	2
9	BL 000 802 203	BEARING EZO 608 ZZ	3
10	BS 036 000 805	PRECISION WASHER 14X8X0,5	5
11	BS 501 900 800	NUT M8 DIN 439	2
12	BS 532 008 306	WASHER M8X30X3	2
13	BS 512 000 820	BOLT M8X20 DIN 933	6
14	BS 531 000 800	WASHER M8 DIN 125	10
15	MPA 01 140 530	0	2
16	BK 151 200 800	CABLE 2x800MM	2
17	MPA 01 140 540	0	1
18	BS 512 000 825	BOLT M8X25 DIN 933	3
19	BS 531 001 000	WASHER M10 DIN 125	10
20	BS 512 001 020	BOLT M10X20 DIN 933	8
21	BS 531 000 600	WASHER M6 DIN 125	30
22	BS 502 000 600	SELF LOCKING NUT M6 DIN 985	5
23	BS 554 100 616	BOLT M6X16 DIN 603	4
24	MPA 01 140 330	0	2
25	MPA 01 140 310	BELT GUARD-L	1
26	MPA 01 140 300	CHASSIS BL 450 EZR	1
27	BS 512 000 616	BOLT M6X16 DIN 933	6
28	MPA 01 140 320	BELT GUARD-R	1
29	MPA 01 140 285	BELT GUARD	1
30	BW 040 020 010	WHEEL 4.80-4	2
31	MPA 01 140 110	0	4
32	BB 040 304 030	LOCKING PIN WITH BRACKET 4.5X36	2
33	BR 900 000 400	ANTIVIBRATION BLOCKS	4
34	BH 240 500 003	EXPANSION TANK	1
35	BS 512 000 620	BOLT M6X20 DIN 933	2
36	BQ 505 010 040	SAFETY STICKER 60X100 (SPARK PLUG)	1
37	BS 502 001 001	SELF LOCKING NUT M10X1.25 DIN 985	4
38	MPA 01 140 440	LOWER STEERING HANDLE	1



ELIET BL 450 EZR -- CHASSIS					
NO	MMA-01.140.210	REV	1	DATE	2006/12/21

ELIET SPARE PARTS MANUAL

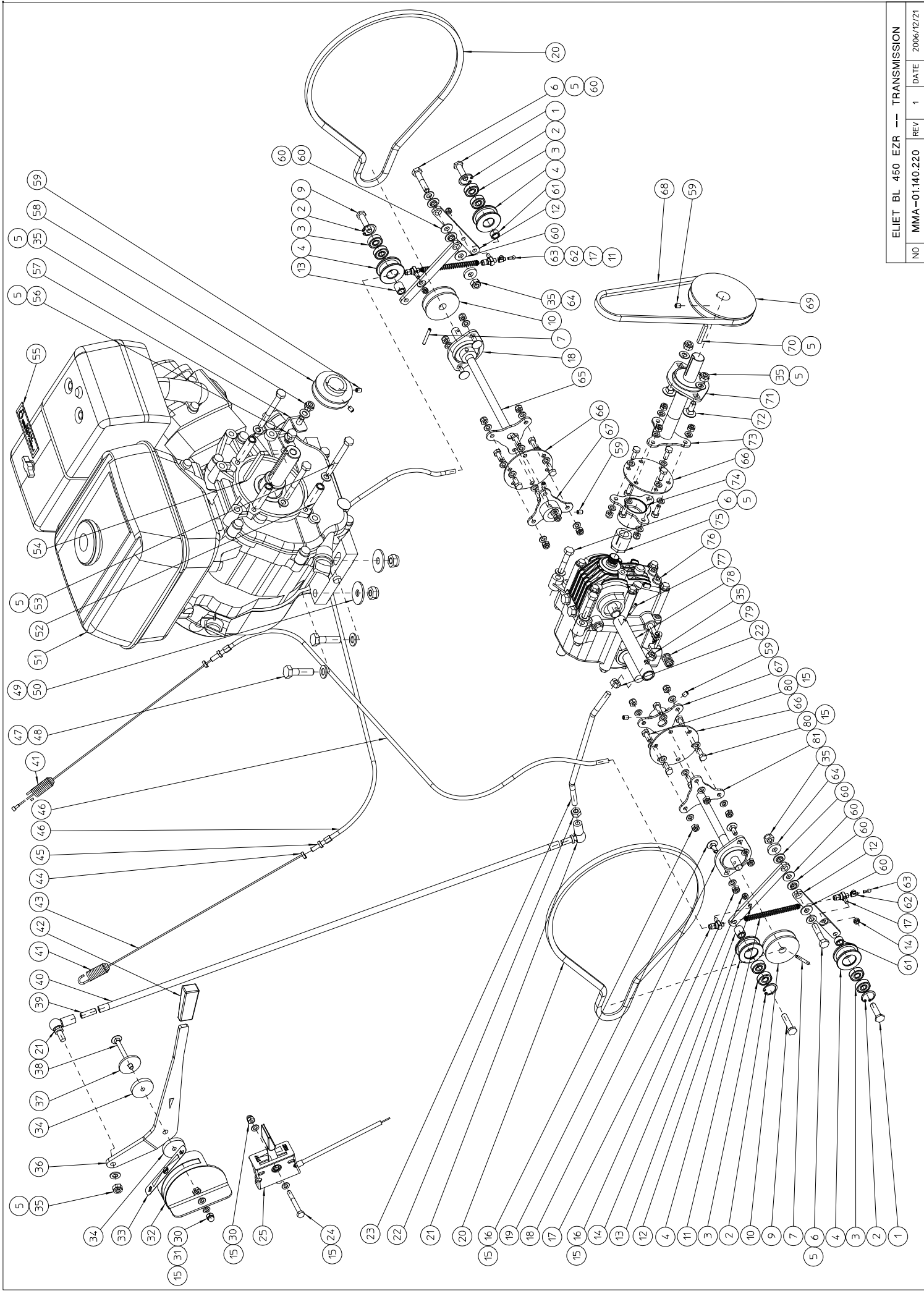
BL 450 VERSION 2

ASSEMBLYLIST 2

BL 450 EZR -- CHASSIS

MMA 01 140 210-1

ITEM	PART NUMBER	DESCRIPTION	QUANTITY
39	BS 505 500 600	NUT M6 DIN 1587	9
40	BS 511 000 640	BOLT M6X40 DIN 931	2
41	BS 551 100 644	EYE BOLT M6X60 DIN 444	2
42	BS 501 000 600	NUT M6 DIN 934	3
43	MPA 01 140 430	UPPER STEERING HANDLE	1
44	BS 511 000 635	BOLT M6X35 DIN 931	3
45	MPA 01 140 470	0	1
46	MPA 01 140 550	0	1
47	BB 011 000 100	STARLOCK 10MM	2
48	BV 914 000 050	SPRING	1
49	BR 112 060 300	NYLON BUSHING WITH COLAR (4.2/5.9/10x3/1.3)	2
50	BS 531 000 400	WASHER M4 DIN 125	2
51	BS 512 000 412	BOLT M4X12 DIN 933	1
52	BE 090 132 101	BLACK WIRE 1.5 CE 210	1
53	BS 534 000 400	LOCK WASHER M4 DIN 6798A	1
54	BS 505 500 400	NUT M4 DIN 1587	1
55	MPA 01 140 560	HANDLE	1
56	BS 512 000 630	BOLT M6X30 DIN 933	2
57	BN 231 002 063	SOFT RUBBER GRIP DIA 22MM (L=635MM)	1
58	MPA 01 140 460	0	1
59	MPA 01 140 555	0	1
60	BS 532 010 305	WASHER M10X30X2.5	1
61	BS 512 001 016	BOLT M10X16 DIN 933	1
62	BR 112 202 100	NYLON BUSHING WITH COLAR (20/24/29x21/1)	2
63	BY 100 106 100	GREASE FITTING M6	1
64	MPA 01 140 900	0	1
65	MPA 01 140 020	WHEEL FORK	1
66	BQ 505 010 150	SAFETY STICKER 60X100 (DISTANCE)	1
67	BQ 505 010 050	SAFETY STICKER 60X100 (PICTOGRAM)	1
68	BS 511 000 848	BOLT M8X80 DIN 931	1
69	MPA 01 140 010	WHEEL AXLE	1
70	BW 321 020 160	WHEEL WITH BEARING 210X65	1
71	MPA 01 140 325	0	2
72	BS 532 010 406	WASHER M10X40X3	2
73	MPA 01 140 535	BRAKE PEDAL	1
74	BS 532 008 254	WASHER M8X25X2	1



ELIET BL 450 EZR -- TRANSMISSION			
NO	MMA-01.140.220	REV	DATE
		1	2006/12/21

ELIET SPARE PARTS MANUAL

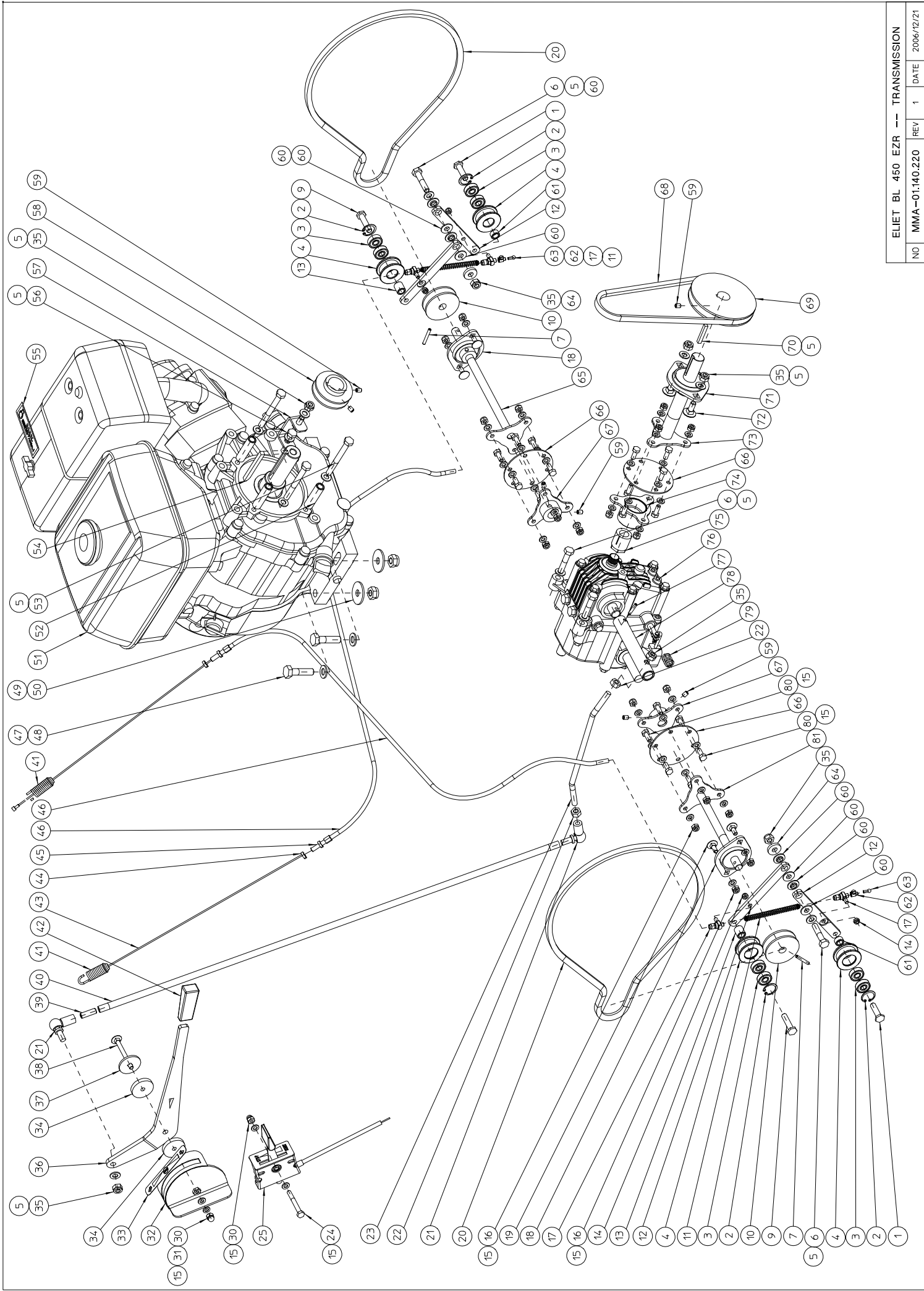
BL 450 VERSION 2

ASSEMBLYLIST 3

BL 450 EZR -- TRANSMISSION

MMA 01 140 220-1

ITEM	PART NUMBER	DESCRIPTION	QUANTITY
1	MPA 01 140 505	SPECIAL BOLT M8X30 DIN 933	2
2	BB 002 000 220	RETAINING RING 22 DIN 472	4
3	BL 000 802 203	BEARING EZO 608 ZZ	8
4	BA 599 006 201	IDLER ROLLER Ø32	4
5	BS 531 000 800	WASHER M8 DIN 125	12
6	BS 511 000 840	BOLT M8X40 DIN 931	4
7	BB 120 040 300	LOCKING 4X30 DIN 1481	2
9	MPA 01 140 510	SPECIAL BOLT M8X35 DIN 933	2
10	BA 564 705 001	PULLEY SPZ 50X12	2
11	BV 914 000 020	SPRING	2
12	MPA 01 140 420	0	4
13	MPA 01 140 415	SPACER 15.5 MM	2
14	BS 502 000 500	SELF LOCKING NUT M5 DIN 985	4
15	BS 531 000 600	WASHER M6 DIN 125	43
16	BS 502 000 600	SELF LOCKING NUT M6 DIN 985	22
17	BK 610 200 500	CABLE SUPPORT M5	4
18	BL 801 101 200	BEARING ASPFL 201	2
19	BS 554 100 616	BOLT M6X16 DIN 603	4
20	BA 521 109 500	BELT XPZ 950	2
21	BA 230 010 800	BALL JOINT M8	2
22	BS 501 000 800	NUT M8 DIN 934	2
23	MPA 01 140 490	0	1
24	BS 511 000 642	BOLT M6X50 DIN 931	1
25	BK 161 161 551	THROTTLE CONTROL + CABLE	1
30	BS 505 500 600	NUT M6 DIN 1587	2
31	BS 534 000 600	LOCK WASHER M6 DIN 6798A	1
32	MPA 01 140 480	0	1
33	BQ 501 140 100	STICKER FRONT/BACK	1
34	BR 101 080 610	NYLON BUSHING??? (8/35x6)	2
35	BS 502 000 800	SELF LOCKING NUT M8 DIN 985	7
36	MPA 01 140 495	0	1
37	MPA 01 140 485	0	1
38	BS 554 200 645	BOLT M6X65 DIN 603	1
39	BS 023 000 825	SET SCREW M8X25 DIN 916	1
40	MPA 01 140 400	0	1
41	BV 914 000 030	SPRING	2
42	BN 230 100 200	PLASTIC GRIP 15X6X60	1
43	BK 151 201 500	CABLE 2x1500MM	2



ELIET BL 450 EZR -- TRANSMISSION			
NO	MMA-01.140.220	REV	DATE
1		1	2006/12/21

ELIET SPARE PARTS MANUAL

BL 450 VERSION 2

ASSEMBLYLIST 3

BL 450 EZR -- TRANSMISSION

MMA 01 140 220-1

ITEM	PART NUMBER	DESCRIPTION	QUANTITY
44	BS 501 900 600	NUT M6 DIN 439	2
45	BK 610 100 600	CABLE SET SCREW M6X34	2
46	BK 212 060 900	CABLE CONDUCTOR 6MM 90CM	2
47	BS 531 001 000	WASHER M10 DIN 125	4
48	BS 511 001 040	BOLT M10X40 DIN 931	4
49	BS 502 001 000	SELF LOCKING NUT M10 DIN 985	4
50	BS 532 010 356	WASHER M10X35X3	4
51	BM 202 109 000	HONDA GX 270	1
52	MPA 01 140 095	SPACER	3
53	BS 511 040 845	BOLT UNF 5/16"X2"3/4	3
54	BB 342 060 668	KEY 6.35X6.35X68 DIN 6880	1
55	BQ 505 010 030	STICKER MAX 3200 RPM 90X25	1
56	BS 512 040 816	BOLT UNF 5/16"X5/8"	1
57	MPA 01 140 115	0	1
58	BA 564 705 601	PULLEY SPZ 56X25.4X6.4	1
59	BS 023 000 608	SET SCREW M6X8 DIN 916	7
60	BR 112 080 300	NYLON BUSHING WITH COLAR (8.2/10.9/18x3.5/1.5)	8
61	MPA 01 140 410	SPACER 7.5 MM	2
62	BK 170 207 000	CABLE FASTENER 7X10MM	2
63	BK 213 020 010	CABLE END	2
64	BS 531 200 800	WASHER M8 DIN 7349	2
65	MPA 01 140 350	0	1
66	BR 910 000 130	FLEXIBLE COUPLING	3
67	MPA 01 140 375	0	2
68	BA 522 606 370	BELT SPZ 637	1
69	BA 564 710 001	PULLEY SPZ 100X20X5	1
70	BB 341 050 535	KEY 5X5X35 DIN 6880	1
71	BL 801 102 001	BEARING + FLANGES ASPFL 204	1
72	BS 554 100 820	LOCKBOLT M8X20 DIN 603	2
73	MPA 01 140 380	0	1
74	MPA 01 140 370	0	1
75	BB 503 150 250	TRANSTORQUE Ø15/Ø25	1
76	BH 240 500 002	VARIABLE DISPLACEMENT PUMP HONDA VR 30S	1
77	BB 120 040 200	LOCKING 4X20 DIN 1481	1
78	MPA 01 140 390	0	1
79	BV 911 000 010	SPRING 14X2X16	1
80	BS 512 000 616	BOLT M6X16 DIN 933	18
81	MPA 01 140 360	0	1